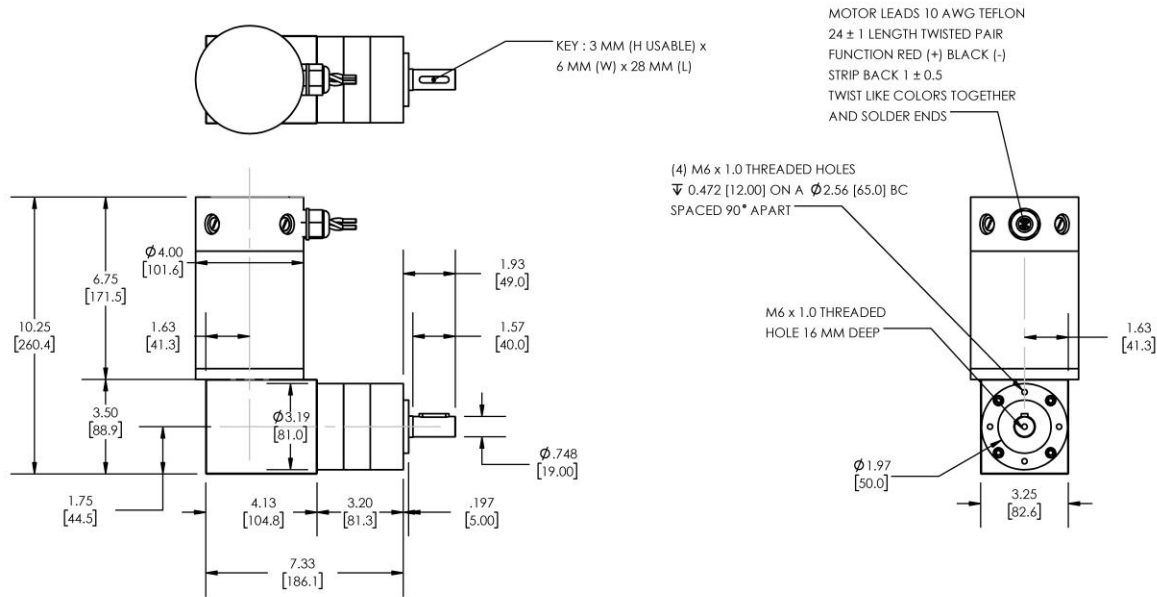


Model Number:

MMP D40-675B-24V GRA81-022



DIMENSIONS ARE INCHES [MM] UNLESS OTHERWISE STATED

PLANETARY GEARMOTOR OUTPUT PARAMETERS:	VALUE	UNITS	TOLERANCE
Gearhead Ratio (exact)	22.20 : 1		
Gearhead Shaft Output Speed (at full-load)	140	RPM	MAX
Gearmotor Rated Continuous Torque	172	In-Lbs	MAX
Gearmotor Rated Peak Torque	1062++	In-Lbs	----
Gearhead Standard Backlash	33	Arc Minutes	MAX
Gearhead Efficiency	75%	----	----
Output Shaft Radial Load Capacity	135	Lbs	MAX
Output Shaft Axial Load Capacity	27	Lbs	MAX
Gearmotor Total Weight	20	Lbs	MAX

++ All Peak Torque values are dependent upon duty. Contact our sales office for details.

DC MOTOR PERFORMANCE PARAMETERS:	VALUE	UNITS	TOLERANCE
Rated DC Voltage	24	DC VOLTS	----
Rated Continuous Current	21.1	AMPERES	----
No-Load Speed	3478	RPM	MAX
Rated Speed	3117	RPM	+/- 15%
Rated Continuous Power Out	380	WATTS	+/- 15%
Rated Continuous Torque	165	OZ-IN	----
Peak Torque (motor only)	1256	OZ-IN	----
No-Load Current	3.31	AMPERES	MAX
Back EMF Constant (Ke)	6.9	V/KRPM	+/- 10%
Torque Constant (Kt)	9.3	OZ-IN/AMP	+/- 10%
DC Armature Resistance	0.12	OHMS	+/- 15%
Armature Inductance	0.12	mH	+/- 15%
Armature temperature	155	DEG. C	MAX

NOTES:

- ENCODER & BRAKE OPTIONS AVAILABLE – [FOLLOW THIS LINK FOR DETAILS](#)
- NEMA MOUNTING FLANGE OPTION AVAILABLE – [FOLLOW THIS LINK FOR DETAILS](#)

MIDWEST MOTION PRODUCTS, INC

DESIGN, MANUFACTURING & DISTRIBUTION - MOTION CONTROL EQUIPMENT

www.midwestmotion.com

email: sales@midwestmotion.com